



PFD's Malaria Control Programs

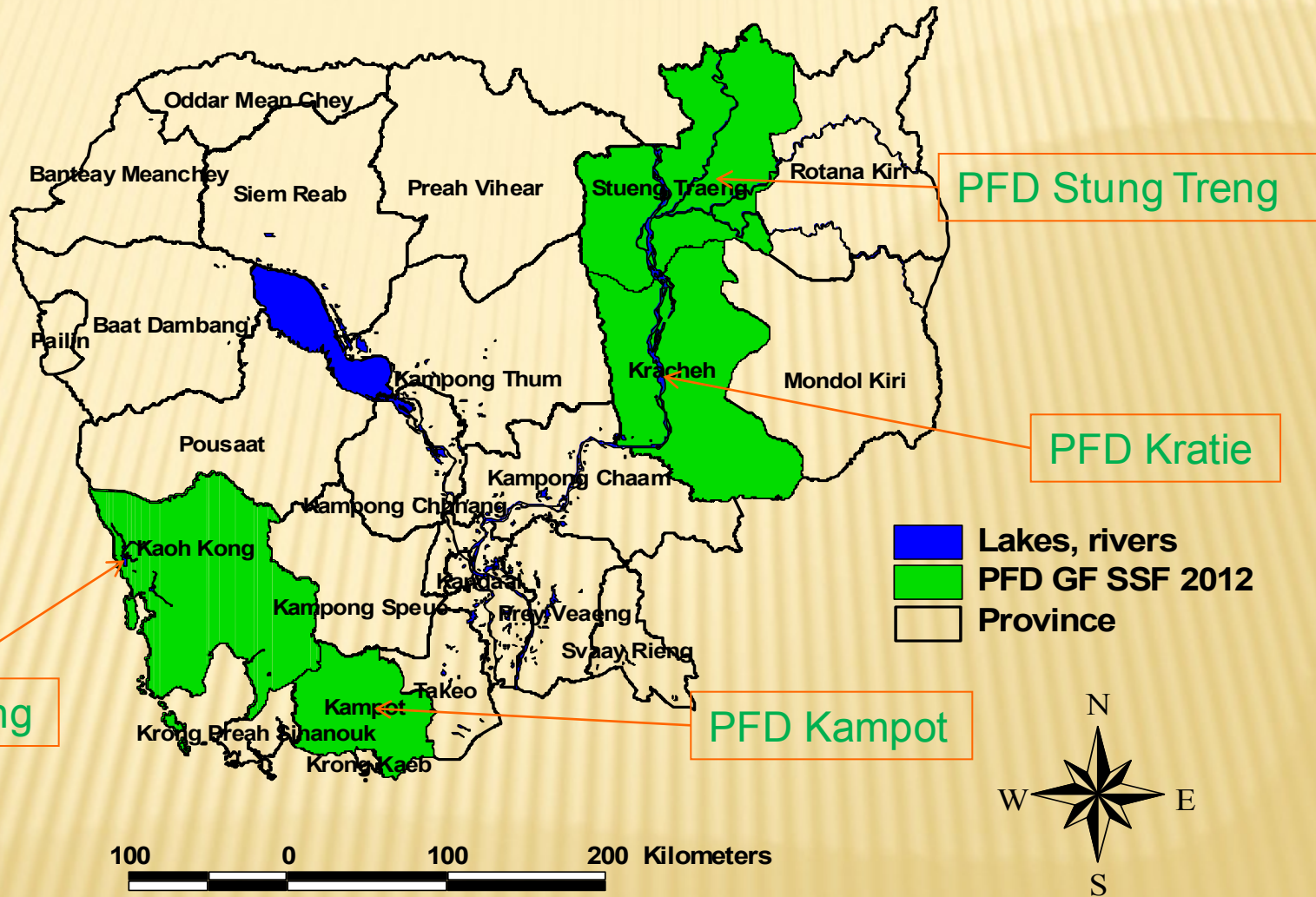
***Annual Conference
March 21 - 22, 2013
NAGA WORLD***

Partners for Development

Outline

- Target provinces
- Strategic approaches
- Behavior change communication (BCC)
- Main activities and results
- Selected key indicators
- Research activities
- Innovation
- Way forward

PFD GFATM SSF Malaria Program 2012



Target Provinces and Funding Sources

1. Koh Kong and Kratie Provinces

GF Round 6, R2-RCC and Round SSF

- **Child-to-Child Methodologies, School-based Malaria Interventions**
- **Community-based Malaria Interventions**

2. Stung Treng Province

GF Round R2-RCC and Round SSF

- **Child-to-Child Methodologies, School-based Malaria Interventions**
- **Community-based Malaria Interventions**

3. Kampot Province (1 OD)

GF Round SSF

- **Community-based Malaria Interventions**

STRATEGIC APPROACHES

- ✘ **PFD's Malaria Program follows National Malaria Strategies focusing on:**
 - + Decentralized strategy (*small-fund to cc, HCMC meetings...*)
 - + Community-based approach
 - + Health system strengthening: Small-fund Project

- ✘ **Collaboration/Partnership with main stakeholders:**
 - + CNM, PHD/PMU/OD, POE/DOE,
 - + other NGOs (PSI, HU/HPA)
 - + Research institutions: Institut Pasteur du Cambodge (IPC), Institut de Recherche pour le Developpement (IRD)

- ✘ **Communication through monitoring/field visits, network, regular workshops**

- ✘ **Combination of:**
 - + Implementation of proven interventions (*LLIN distribution, health education, BCC, etc.*)
 - + Pilot of new interventions
 - + Survey/research on existing and new interventions

BCC ACTIVITIES

- + Community level volunteers (VHVs, VHSGs, MMWs): Regular health education sessions provided individually and through small groups.
- + School teachers and children: school based health education using then Child-to-Child methodology (student performance, role-play video sessions both in school and in the community, etc.)
- + Special events: Malaria Week/event, Malaria Day, IBN campaigns

IEC Materials

- ✘ Posters: 2,500
- ✘ Leaflets: 5,000
- ✘ Calendars: 2,000
- ✘ Billboards: 5
- ✘ T-shirts and caps: 2,000



MAIN ACTIVITIES

1. Support training of OD/HC staff and VHSGs/VHVs on:

- + Health education- IEC/BCC on Rational Drug Use, Fake Drug, Early Diagnosis and Treatment, LLIN/LLIHN.
- + ITN: LLINs/LLIHNs distribution
- + Drug Logistic Management
- + Basic Epidemiology on Malaria
- + GIS and Mapping

2. Support training of POE/DOE and teachers on:

- + School Health Education on malaria using Child-to-Child methodology/role-play

MAIN ACTIVITIES & PROGRESS

3. MALARIA WEEK & HEALTH EDUCATION

Since 2005, PFD has been implementing the **Malaria Week**: To cover at risk population before the rainy season with the following interventions:

1. Community-based HE/BCC
2. Bed net distribution and re-impregnation
3. Early Diagnosis and treatment (EDAT)

62 events/weeks were conducted with over 23,830 people (9,365 women) attending, conducted 806 community-based health education sessions using LCD shows with over 126,459 people attending; and supported PMUs distributed over 354,412 bed-nets (ITN) reaching to over 354,858 intended at-risk groups.

Key outcomes:

- Integration of activities and stakeholders during combined community-based events is feasible, attractive, cost saving and allow to reach more people
- The Malaria Week has been implemented by the MCC project (URC/PFD) in the north-western provinces since 2008.



MAIN ACTIVITIES & PROGRESS

4. MALARIA SCHOOL HEALTH EDUCATION

- **Child-to-Child Methodology, Game & Quiz on Malaria Prevention, School Health Education Sessions, Extracurricular activities, Role Plays, Drama, Production of video of role-play performed by children**

492 teachers were trained in SHE and over 21,031 school children benefited from the program

Key outcome:

- Integration of school health activities with malaria community-based events has been successful
- PFD's approach has been integrated in the National Curriculum and this approach has been adopted in north-western Cambodia.



MAIN ACTIVITIES & PROGRESS

5. Support meetings and workshops at national/provincial/OD and HC levels for malaria program planning

- Organized 11 semi-annual and annual workshop at national and provincial levels with participation 575 participants (115 women)

6. Support community level referral by providing small funds (\$200/quarter) to CC/HCMC

- 12 communes (5 in Kratie, 4 in Koh Kong and 3 in Stung Treng) actively participated and implemented small-fund project, strengthen referral system, awareness on malaria education and prevention to community members.



KEY INDICATORS

Indicators Description	Target 2012	Result 2012	%
Number of D3 positive cases followed-up	124	75	60%
Number of Malaria Events conducted (Malaria Weeks, Semi-annual Lucky Draw; National Malaria Day)	45	67	149%
Number of school children benefit from school health education program	15000	21031	140%
Number of people reached through community health education (Malaria Events; Community Heal Education)	18000	146342	813%
Number of new VHVs trained in Malaria Health Education and Referral System	137	103	75%
Number of existing VHVs received refresher training on Malaria Health Education	188	603	321%

KEY INDICATORS (CONT'D)

Indicators Description	Target 2012	Result 2012	%
Number of school teachers received refresher training on Malaria School Health Education using Child-to-Child methodology.	448	492	110%
Number of communes participating in Community Based Malaria Intervention.	48	48	100%
Number of quarterly Health Center Management Committee (HCMC) meetings conducted	108	108	100%

MOBILE & MIGRANT POPULATION - PROGRESS

- ✘ Selected and trained 75 mobile and migrant populations (MMPs) in three provinces of Kratie, Kampot and Koh kong
- ✘ Organized two workshops to develop multi-sectoral profiles in Kratie and Koh Kong with participation of 129 participants (27 women)
- ✘ Implementation plan and guideline for MMP and D3 positive case follow up developed and implemented (internal)
- ✘ D3 positives stations set up in Snoul and Damrei Phong/Chhloung referral hospital
- ✘ MMWs provided blood testing 988 malaria suspected cases: 224 positive (PF=55; PV=152; Mix=17), 755 negative and 9 invalid.

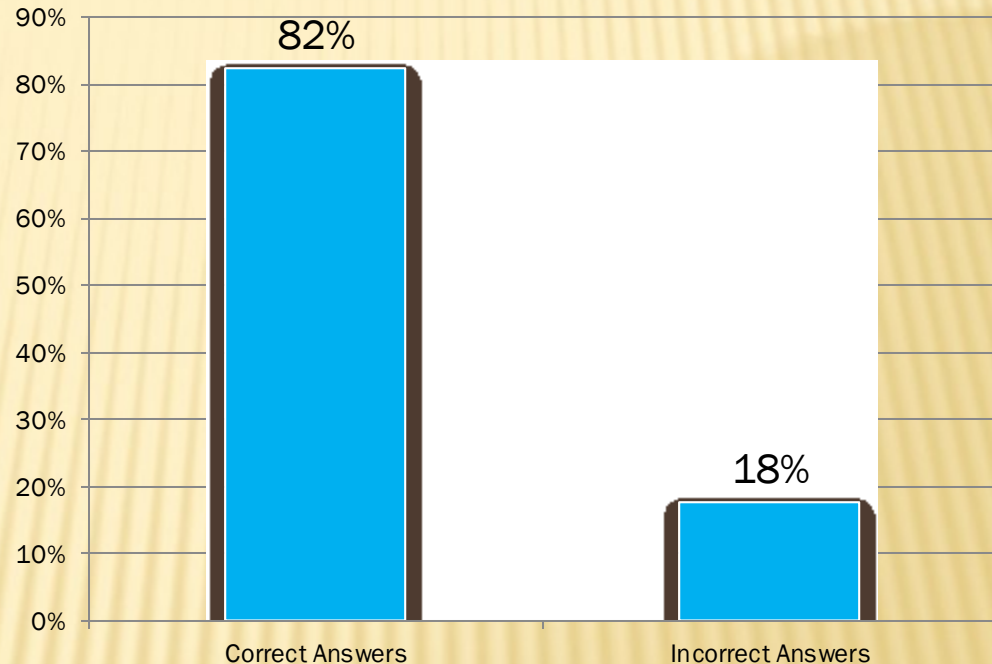
RESEARCH ACTIVITIES AND PROGRESS

- × Operational research in partnership with
 - + CNM:
 - × Assessment of feasibility and efficacy of prevention measure for outdoor transmission
 - + IRD:
 - × Ethnographic investigation on mobile and migrants in target provinces
 - × Assessment of accessibility of prevention measures for outdoor transmission
 - × *The prototype net jacket was tested in Snuol rubber plantation with volunteer workers and in Tatai in Koh Kong province. Bio-assay test showed good results for efficacy.*
 - × *Although used by most of the volunteers, more research is needed to use prevention measures adapted to the activities of people exposed to mosquito bites.*
 - × *A combination of prevention measures is likely to be more effective*



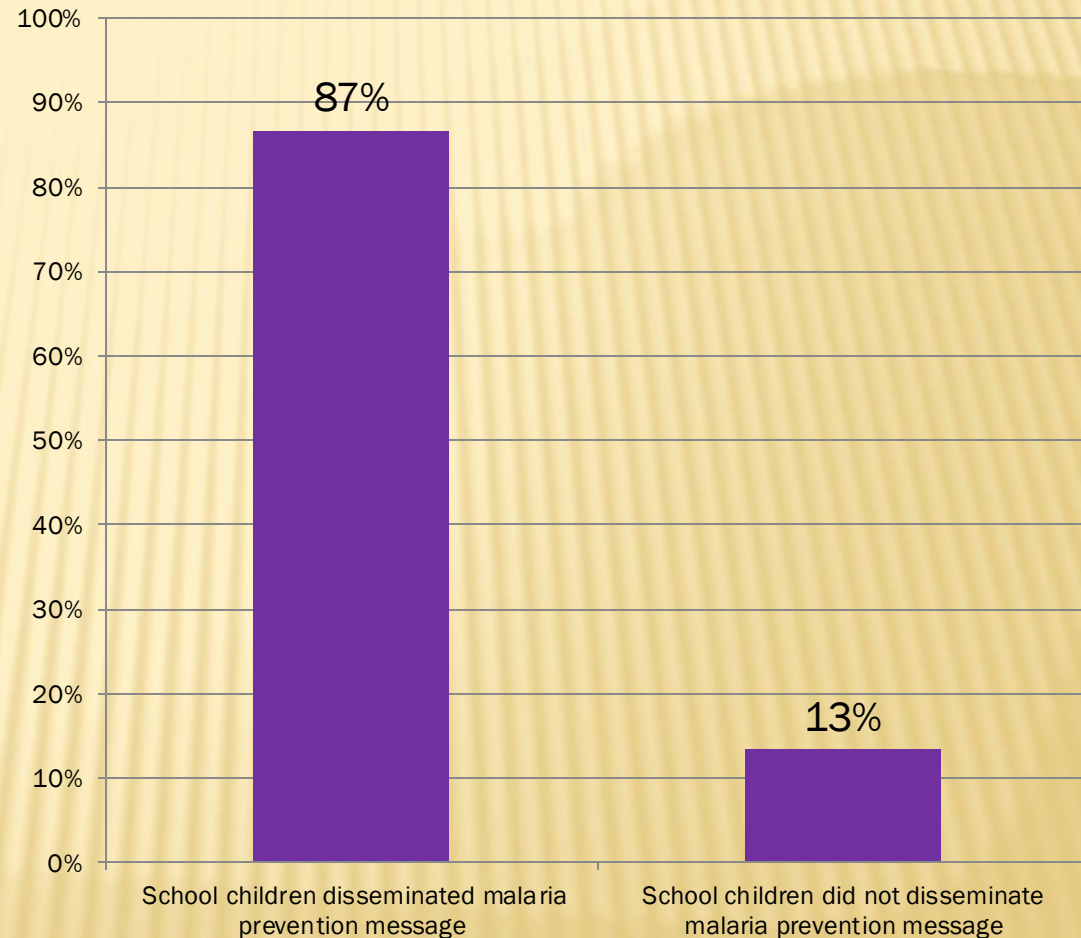
COMMUNITY RESPOND TO QUIZ SHOW

With the promotion of community based health education via LCD shows, the total number of villagers who answered questions is 11729. There are 9662 (82%) who answered questions correctly and 2067 (18%) who responded to the questions incorrectly



CHILDREN SPREAD MALARIA MESSAGE

Among 60 correspondences, there are 52 (87%) school children who disseminated malaria prevention to their friends, families and community members by either singing songs, teaching information or telling a story about malaria. Additionally, they encouraged families to practice malaria prevention. Moreover, eight (13%) school children failed to disseminate malaria prevention messages because they were embarrassed to speak about malaria and a few children were intimidated to speak with adults about it



INNOVATIONS DEVELOPED

× **MALARIA WEEK**

- + feasible, attractive, cost saving and allow to reach more people

× **Small-Fund Project (12 communes)**

- improving community based-referral system

× **SMALL FUND INITIATIVE**

- + community participation through CC and HCMC on malaria education activities, improve urgent referral cases, direct supervision to VHVs

MOVING FORWARD

- ✘ Focus on mobile and migrant population (strategy, innovation, mapping and research)
- ✘ Development of multi-sectoral provincial profile
- ✘ Multi-sectoral workshop at provincial/districts level focusing on mobile and migrants issues and strategy
- ✘ Design, pilot and delivery of forest packages
- ✘ Building partnership collaboration with relevant NGOs and funding partners to ensure sufficient drugs, prevention materials and supplies for developing and delivering forest packages
- ✘ Community-based malaria health education
- ✘ Capacity building on BCC, data management, health education for health staff, stakeholders, volunteers, POE/DOE/teachers ...
- ✘ Implementation of GF SSF in line with National Malaria Strategy in :
 - + Koh Kong
 - + Kratie

THANK YOU FOR YOUR ATTENTION!